

MONTHLY MEMBERSHIP PROGRESS REPORT

LOCATION INDIA

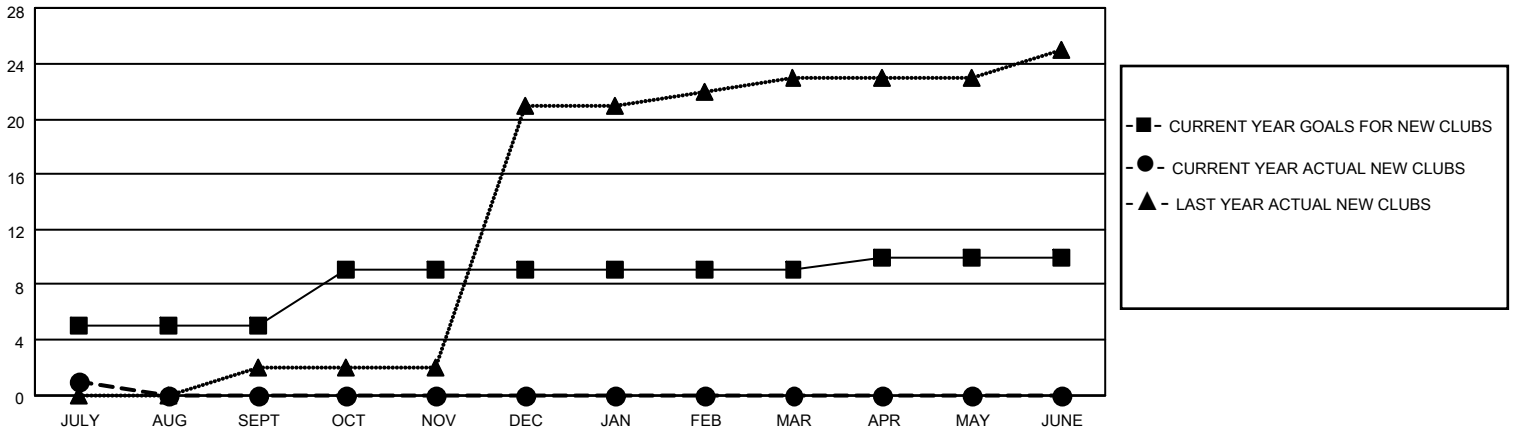
District 321A3

Results as of: 7/31/2021

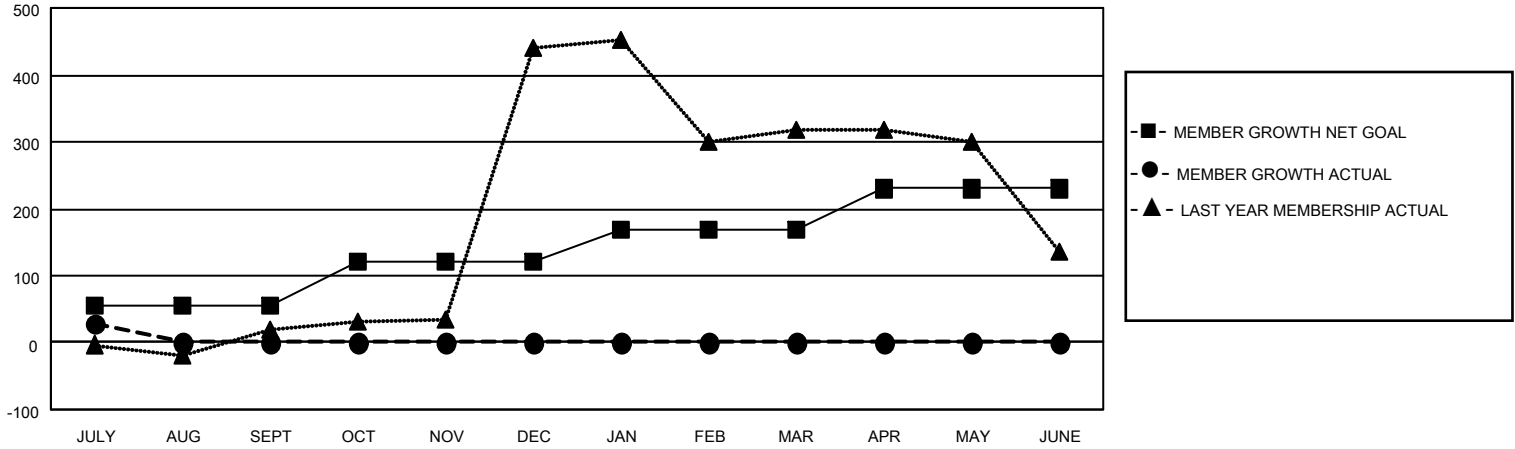
Clubs			
RESULTS FOR 2021-2022			
QUARTER	NEW CLUB GOAL	NEW CLUBS	DROPPED CLUBS
JULY/AUG/SEPT	5	1	0
OCT/NOV/DEC	4	0	0
JAN/FEB/MAR	0	0	0
APR/MAY/JUNE	1	0	0

Members			
RESULTS FOR 2021-2022			
QUARTER	MEMBER GROWTH NET GOAL	MEMBER GROWTH ACTUAL	DROPPED MEMBERS ACTUAL (including transfers)
JULY/AUG/SEPT	55	46	18
OCT/NOV/DEC	65	0	0
JAN/FEB/MAR	50	0	0
APR/MAY/JUNE	60	0	0

GOALS AND ACTUAL NEW CLUBS CUMULATIVE



GOALS AND ACTUAL MEMBERS CUMULATIVE



DROPPED CLUBS: 0	9 CLUBS OF 108 ADDED 1 OR MORE NEW MEMBERS	<u>GENDER DISTRIBUTION</u> MALE 1,622 (79.12%) FEMALE 428 (20.88%)
<u>DROPPED MEMBERS</u> DECEASED 2 CLUB CANCELLED 0 OTHER 16 TOTAL 18	CLICK HERE FOR CUMULATIVE MEMBERSHIP DATA	TOTAL FAMILY UNIT MEMBERS 833 FAMILY MEMBERS PAYING HALF DUES 456